



'Grass half full or grass half empty? Valuing native grassy landscapes'

Friends of Grasslands' forum 30 October – 1 November 2014

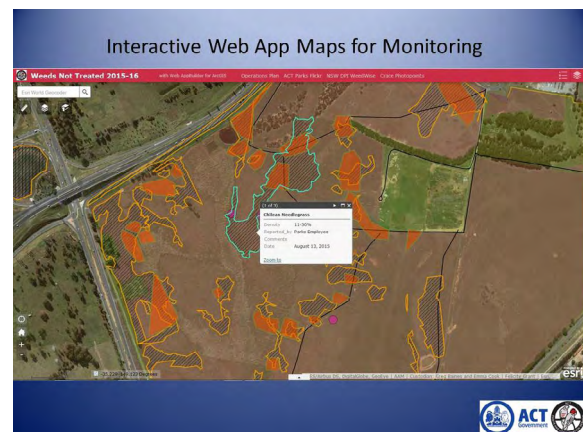
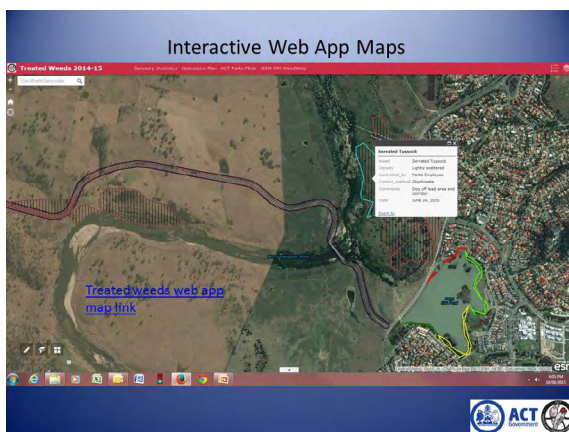
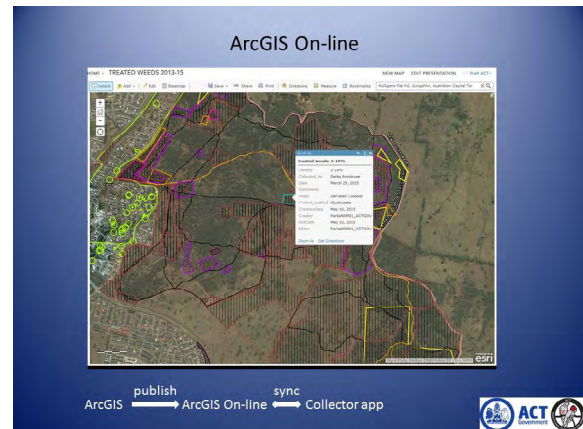
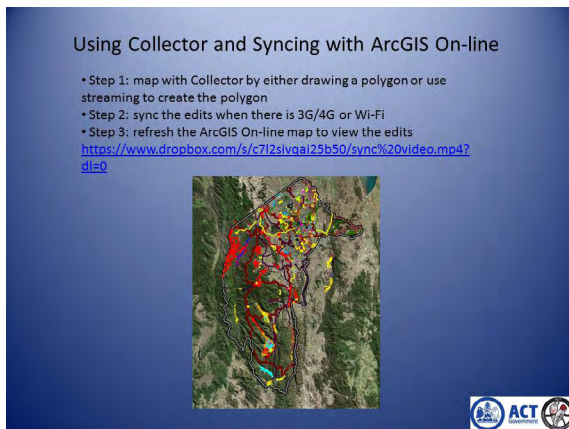
Friends of Grasslands Inc. (www.fog.org.au) supporting native grassy landscapes

Smartphone apps for invasive weed control

Steve Taylor

ACT Parks & Conservation Service

This demonstration outlines the off-line Collector app and off-line Memory-Map app and how ACT Parks & Conservation Service (ACTPCS) Rangers use them for mapping weed infestations. The maps are stored on the Smartphones and tablets (off-line) so that they can be used in remote areas. The Collector app syncs with ArcGIS On-line when a data signal becomes available. The Memory-Map app creates gpx files that can also be uploaded to ArcGIS On-line. The apps also store important data such as reserve boundaries and protected plant sites. See also the poster Steve presented at the forum (this proceedings).



Steve is the Senior Weeds Officer for ACT Parks & Conservation Service (ACTPCS), and has worked as an ACTPCS Ranger. He started his career in land management as a Bush Regenerator in Sydney in the late 1980s.